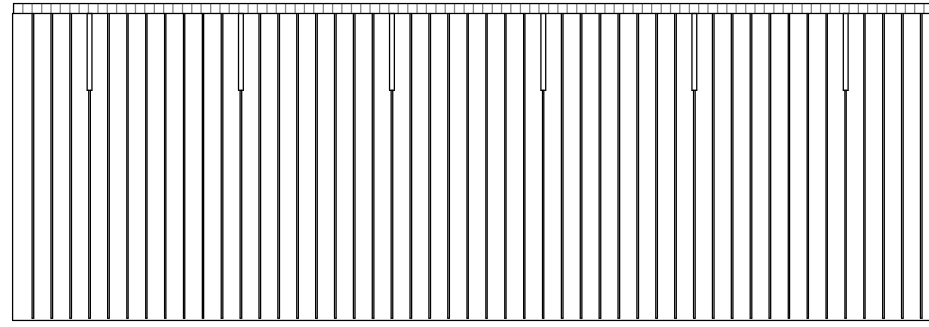
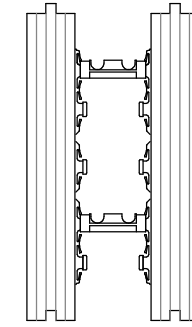


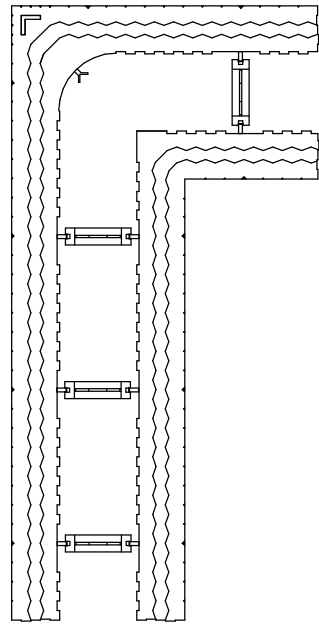
230 Series Corner End Elevation



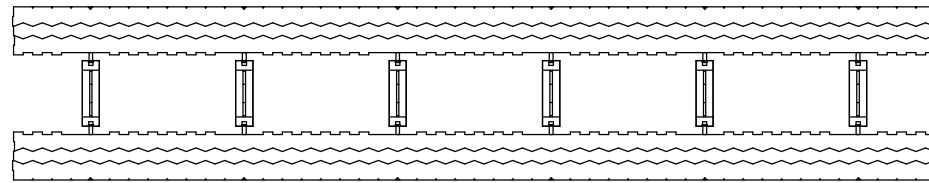
230 Series Elevation



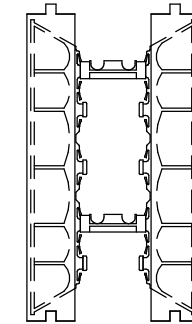
230 Series End Elevation



230 Series Corner Plan




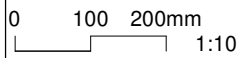
230 Series Plan

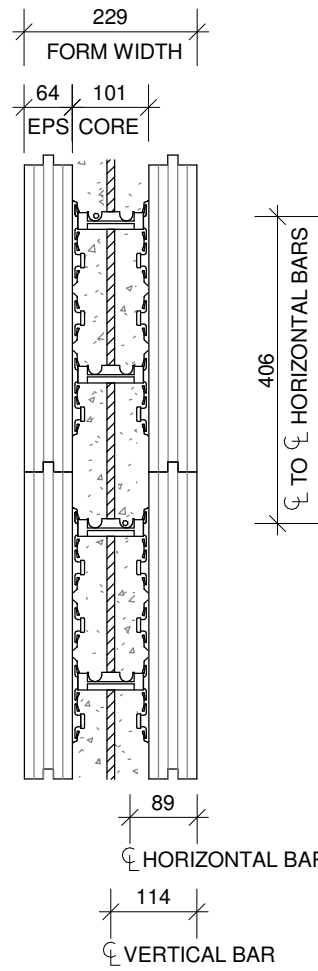


230 Series Section

Series 230 Detail Items

1 : 10

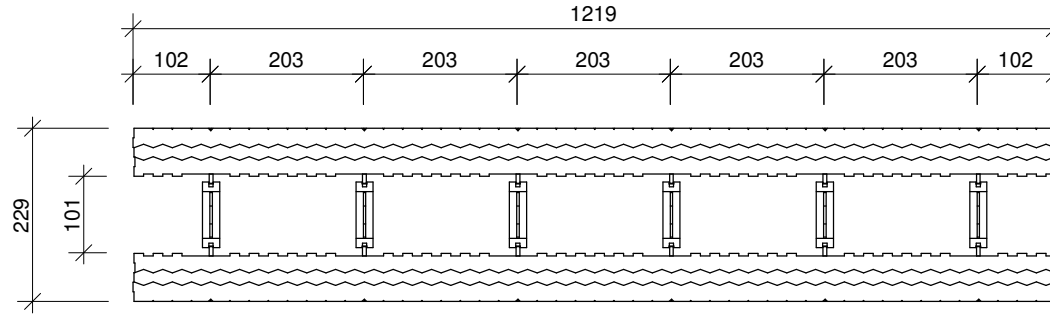
				<p>Eco-Block</p> <p>at</p> <p>for Eco-Block</p>	<p>Series 230 Detail Items</p> <p>Details</p>	<p>Scale at A3 1 : 10</p> <p>Designed</p> <p>Drawn KR</p> <p>Checked PBL</p>	<p>Date 12/02/19</p> <p>Job No</p> <p>Dwg No 001</p> <p>Issue</p>
Iss	Date	Issue Description	Rev	Date	Revision Description		



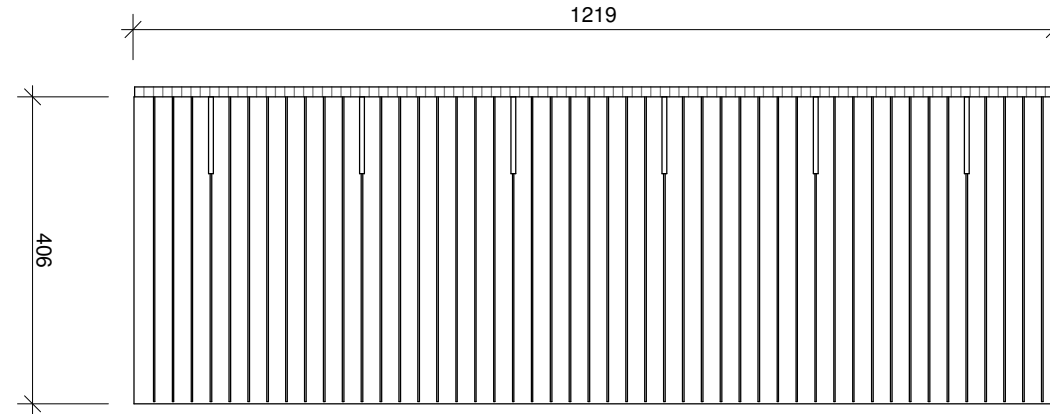
ECO-Block Pty Ltd
TYPICAL REBAR PLACEMENT
101MM CORE
SCALE 1:10

NOTE:
IT IS THE RESPONSIBILITY OF THE DESIGNER / END USER TO VERIFY THAT STRUCTURES BUILT WITH ECO-BLOCK HAVE BEEN DESIGNED, ENGINEERED, AND CONSTRUCTED IN ACCORDANCE WITH ALL APPLICABLE BUILDING CODES AND REGULATIONS

230 REBAR PLACEMENT



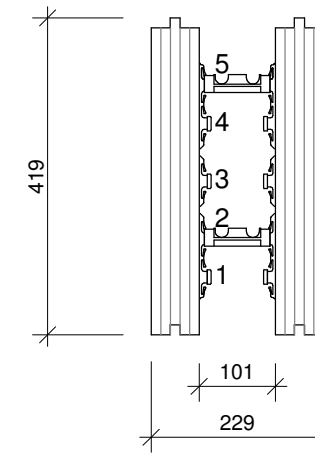
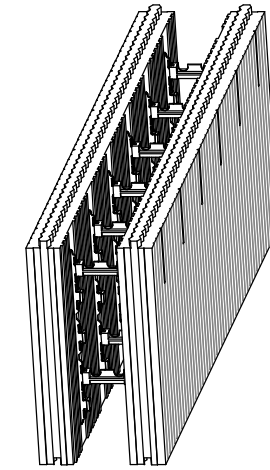
CONCRETE LENGTH TOLERANCE MAY VARY BY 2mm DUE TO CURING AND TEMPERATURE



ECO-Block Pty Ltd
ECO-BLOCK STRAIGHT PANEL
230 SERIES
SCALE 1:10

NOTE:
IT IS THE RESPONSIBILITY OF THE DESIGNER / END USER TO VERIFY THAT STRUCTURES BUILT WITH ECO-BLOCK HAVE BEEN DESIGNED, ENGINEERED, AND CONSTRUCTED IN ACCORDANCE WITH ALL APPLICABLE BUILDING CODES AND REGULATIONS

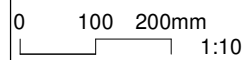
230 STRAIGHT PANEL



BLOCK SHOWN HAS CONNECTORS ARRANGED FOR UPPER COURSES.

FOR FIRST COURSE PLACE A ROW OF CONNECTORS AT THE 1, 3 AND 5 TEE LOCATIONS

Series 230 Straight Panel
1:10



Eco-Block

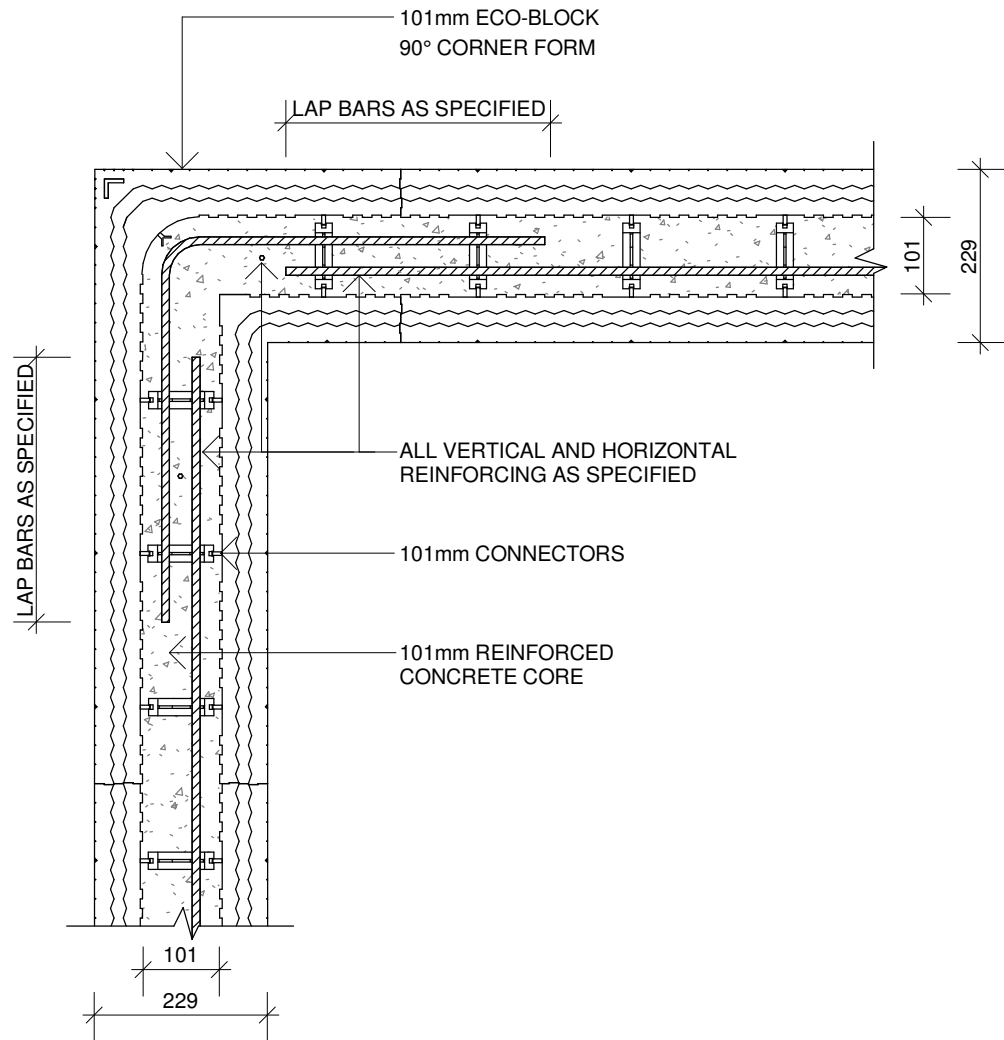
at
for Eco-Block

Series 230 Straight Panel

Details

Scale at A3 1 : 10	Date 12/02/19
Designed	Job No
Drawn KR	Dwg No 002
Checked PBL	Issue

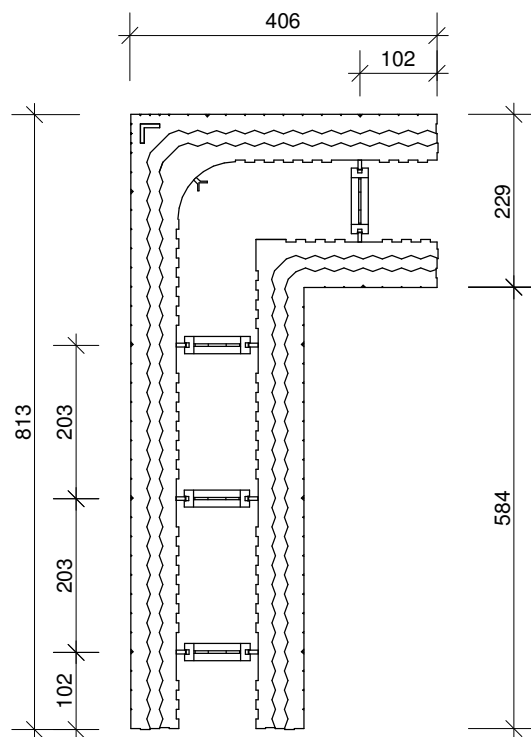
Iss	Date	Issue Description	Rev	Date	Revision Description
-----	------	-------------------	-----	------	----------------------



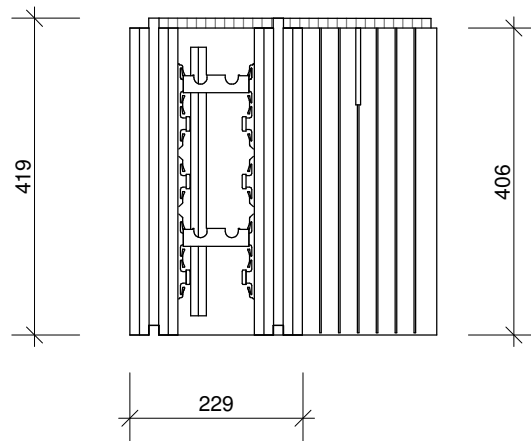
ECO-Block Pty Ltd
TYPICAL 90° CORNER
230 SERIES
SCALE 1:10

NOTE:
IT IS THE RESPONSIBILITY OF THE DESIGNER / END USER TO VERIFY THAT STRUCTURES BUILT WITH ECO-BLOCK HAVE BEEN DESIGNED, ENGINEERED, AND CONSTRUCTED IN ACCORDANCE WITH ALL APPLICABLE BUILDING CODES AND REGULATIONS

230 CORNER REBAR PLACEMENT

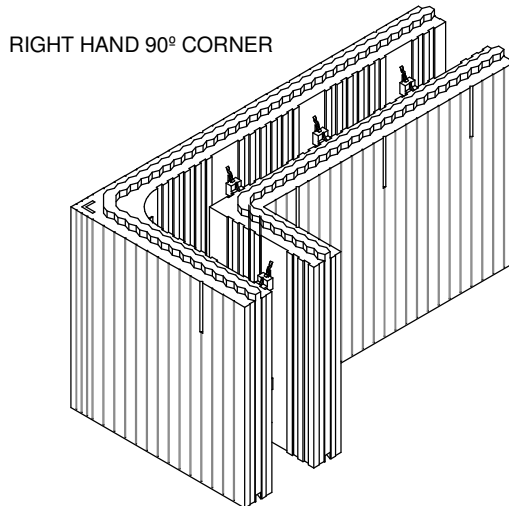
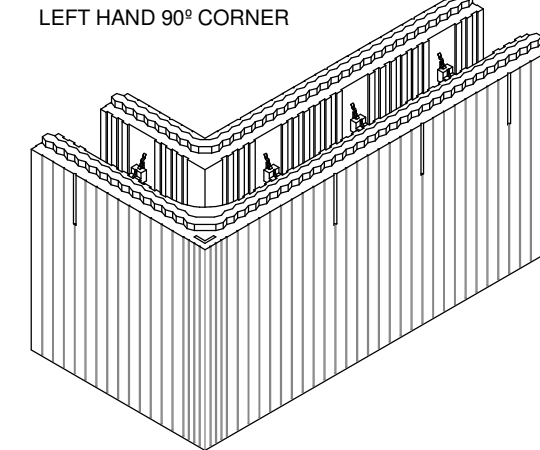


LEFT HAND

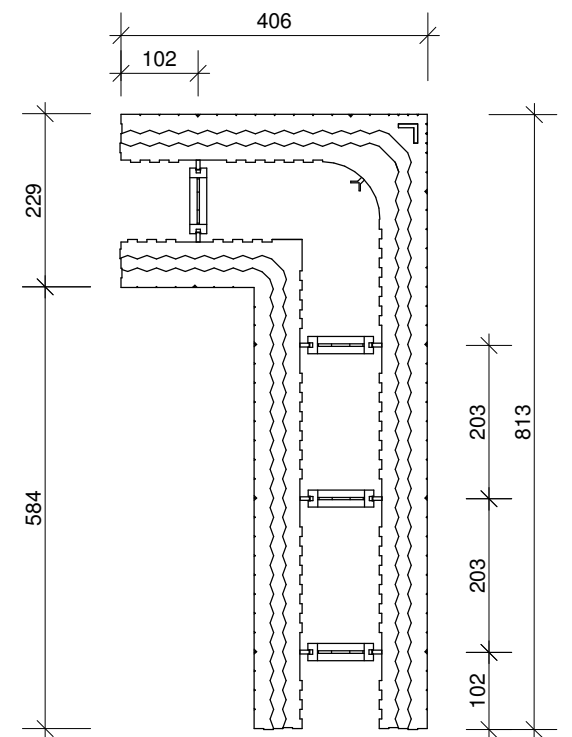


ECO-Block Pty Ltd
ECO-BLOCK STANDARD CORNER
230 SERIES
SCALE 1:10

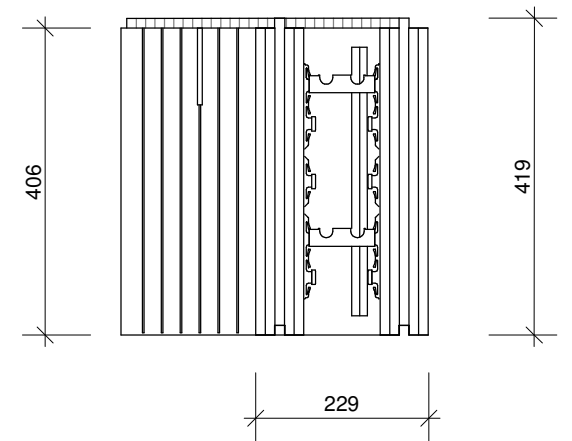
230 STANDARD CORNER



OUTER WALL AREA = 0.58 SQ M PER BLOCK
CONCRETE VOLUME = 0.04 CU M PER BLOCK

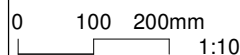


RIGHT HAND



NOTE:
IT IS THE RESPONSIBILITY OF THE DESIGNER / END USER TO VERIFY THAT STRUCTURES BUILT WITH ECO-BLOCK HAVE BEEN DESIGNED, ENGINEERED, AND CONSTRUCTED IN ACCORDANCE WITH ALL APPLICABLE BUILDING CODES AND REGULATIONS

Series 230 Corner Panel
1:10



Eco-Block

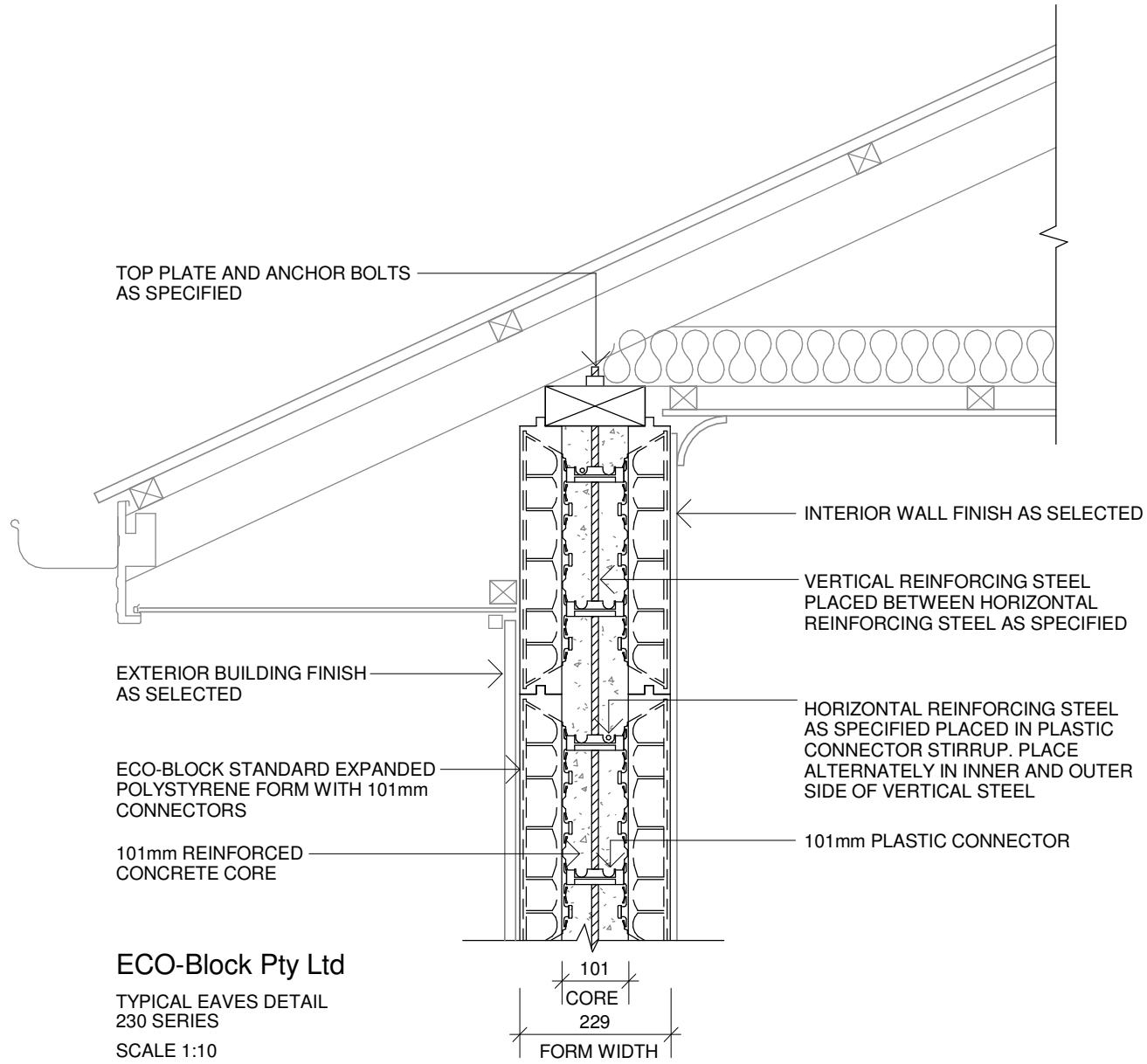
at
for Eco-Block

Series 230 Corner
Panel

Details

Scale at A3 1 : 10	Date 12/02/19
Designed	Job No
Drawn KR	Dwg No 003
Checked PBL	Issue

Iss	Date	Issue Description	Rev	Date	Revision Description
-----	------	-------------------	-----	------	----------------------



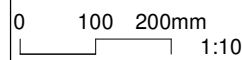
ECO-Block Pty Ltd

TYPICAL EAVES DETAIL
230 SERIES

SCALE 1:10

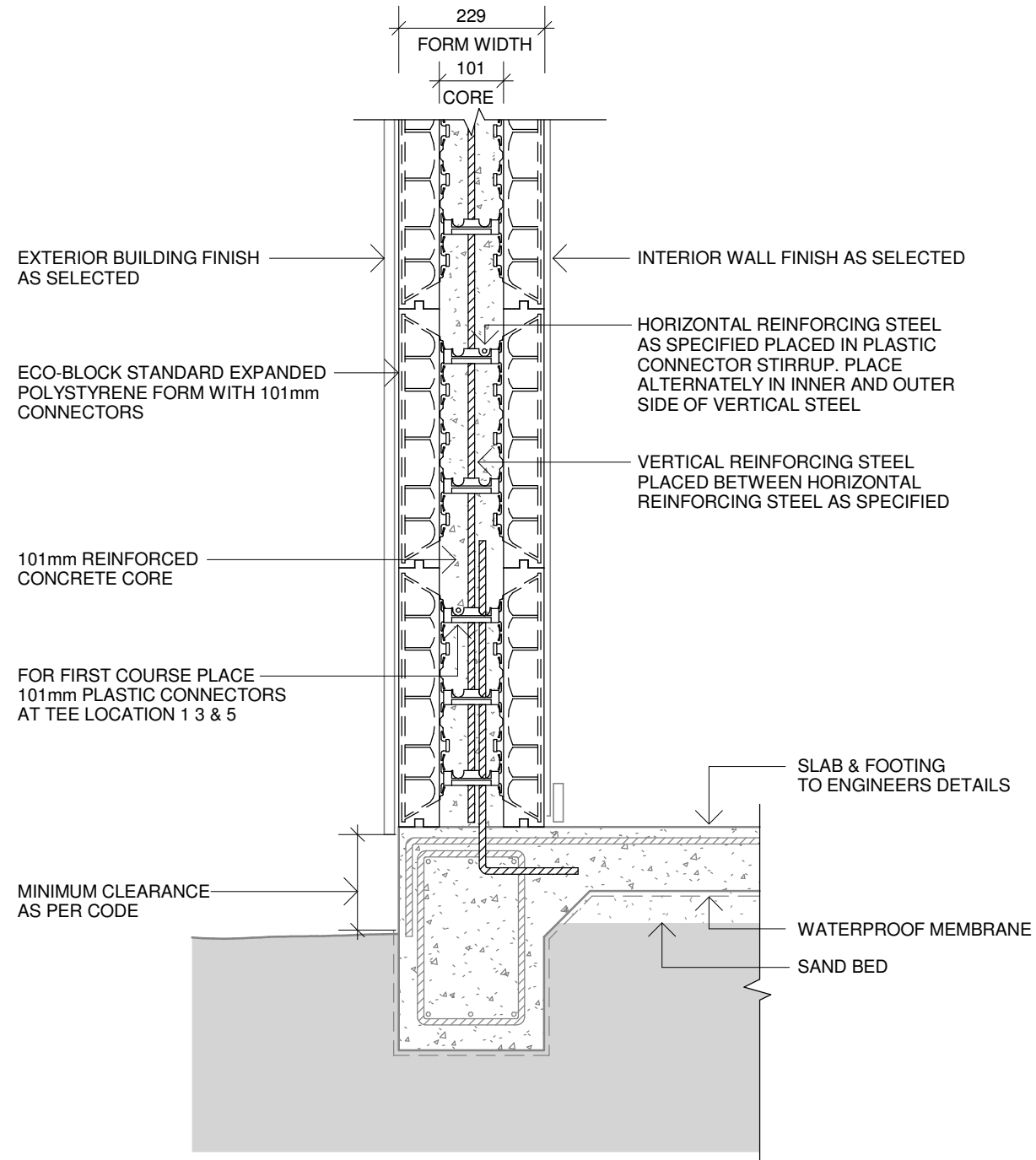
NOTE:
IT IS THE RESPONSIBILITY OF THE DESIGNER / END USER TO VERIFY THAT STRUCTURES BUILT WITH ECO-BLOCK HAVE BEEN DESIGNED, ENGINEERED, AND CONSTRUCTED IN ACCORDANCE WITH ALL APPLICABLE BUILDING CODES AND REGULATIONS

Series 230 Eaves Details
1 : 10



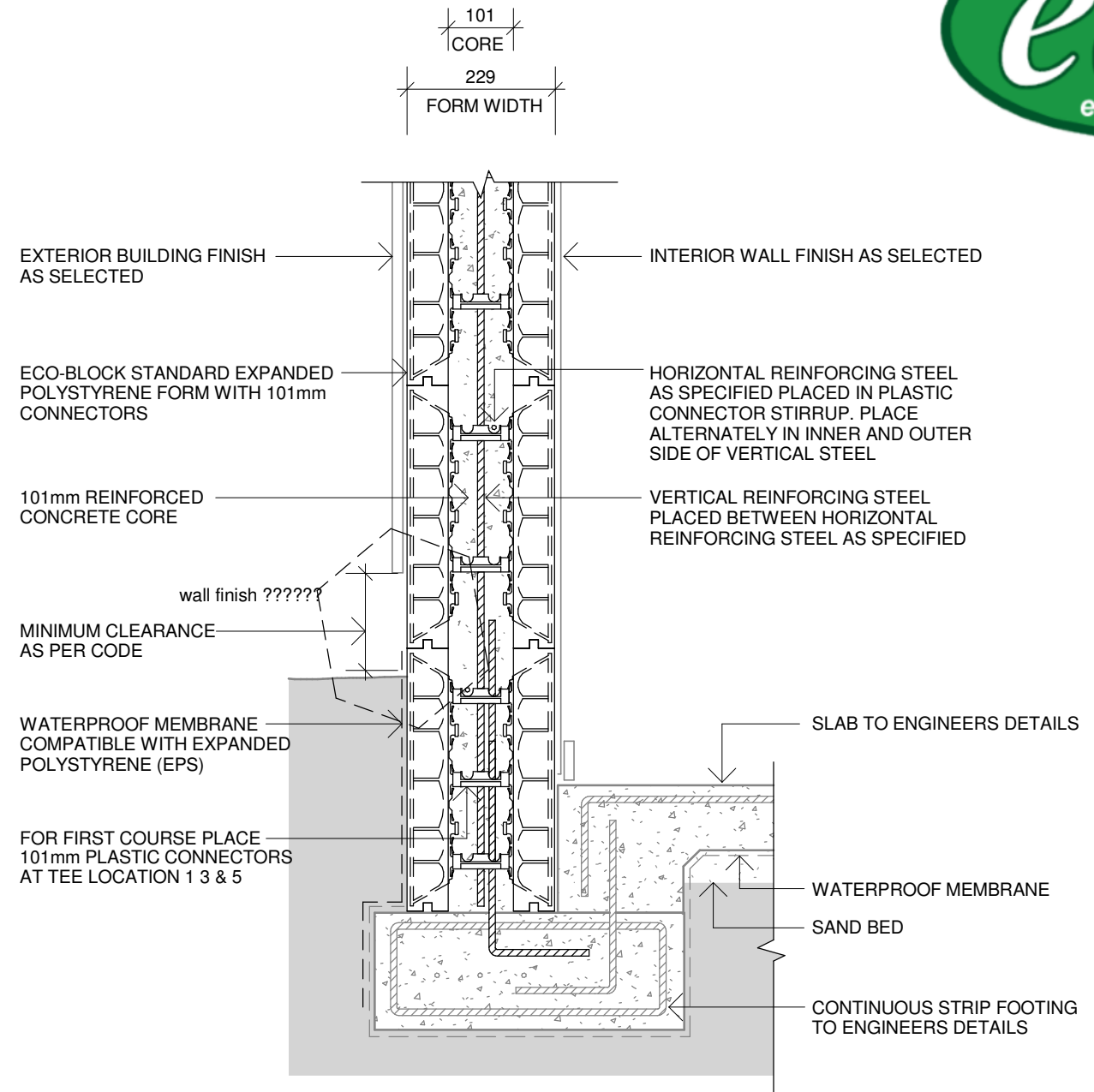
		Eco-Block		Series 230 Eaves		Scale at A3 1 : 10	Date 12/02/19
		at		Details		Designed	Job No
		for Eco-Block				Drawn KR	Dwg No 004
						Checked PBL	Issue

Iss	Date	Issue Description	Rev	Date	Revision Description



ECO-Block Pty Ltd
TYPICAL FOOTING DETAIL
230 SERIES
SCALE 1:10

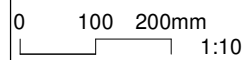
NOTE:
IT IS THE RESPONSIBILITY OF THE DESIGNER / END
USER TO VERIFY THAT STRUCTURES BUILT WITH
ECO-BLOCK HAVE BEEN DESIGNED, ENGINEERED,
AND CONSTRUCTED IN ACCORDANCE WITH ALL
APPLICABLE BUILDING CODES AND REGULATIONS



ECO-Block Pty Ltd
TYPICAL FOOTING DETAIL
230 SERIES
SCALE 1:10

NOTE:
IT IS THE RESPONSIBILITY OF THE DESIGNER / END
USER TO VERIFY THAT STRUCTURES BUILT WITH
ECO-BLOCK HAVE BEEN DESIGNED, ENGINEERED,
AND CONSTRUCTED IN ACCORDANCE WITH ALL
APPLICABLE BUILDING CODES AND REGULATIONS

Series 230 Footing Details
1:10

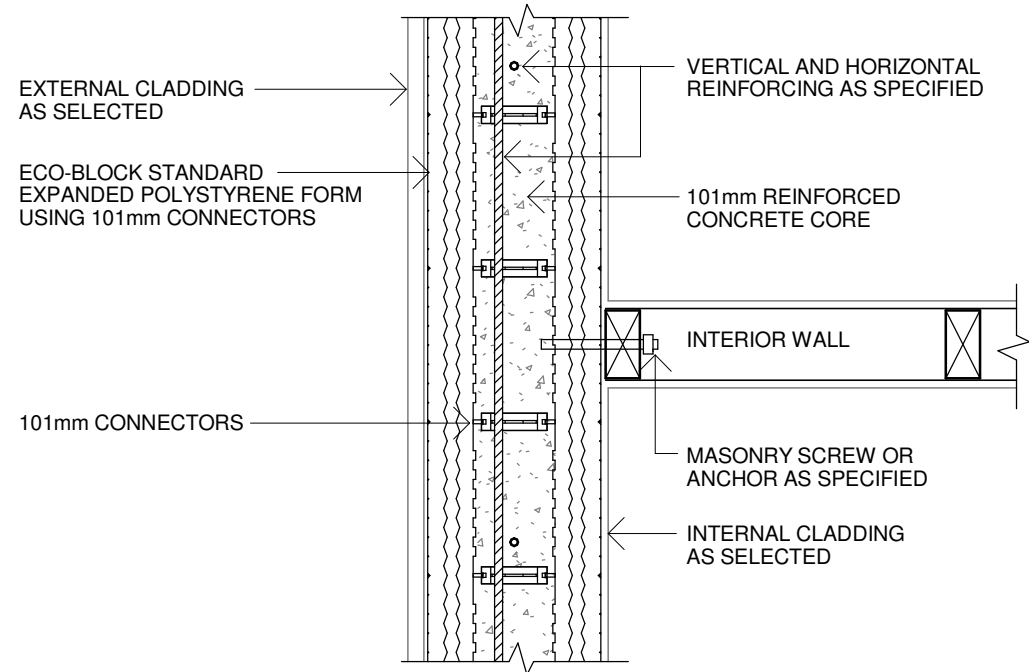


Eco-Block
at
for Eco-Block

Series 230 Footing
Details

Scale at A3 1 : 10	Date 12/02/19
Designed	Job No
Drawn KR	Dwg No 005
Checked PBL	Issue

Iss	Date	Issue Description	Rev	Date	Revision Description
-----	------	-------------------	-----	------	----------------------



ECO-Block Pty Ltd

TYPICAL INTERIOR WALL CONNECTION
230 SERIES

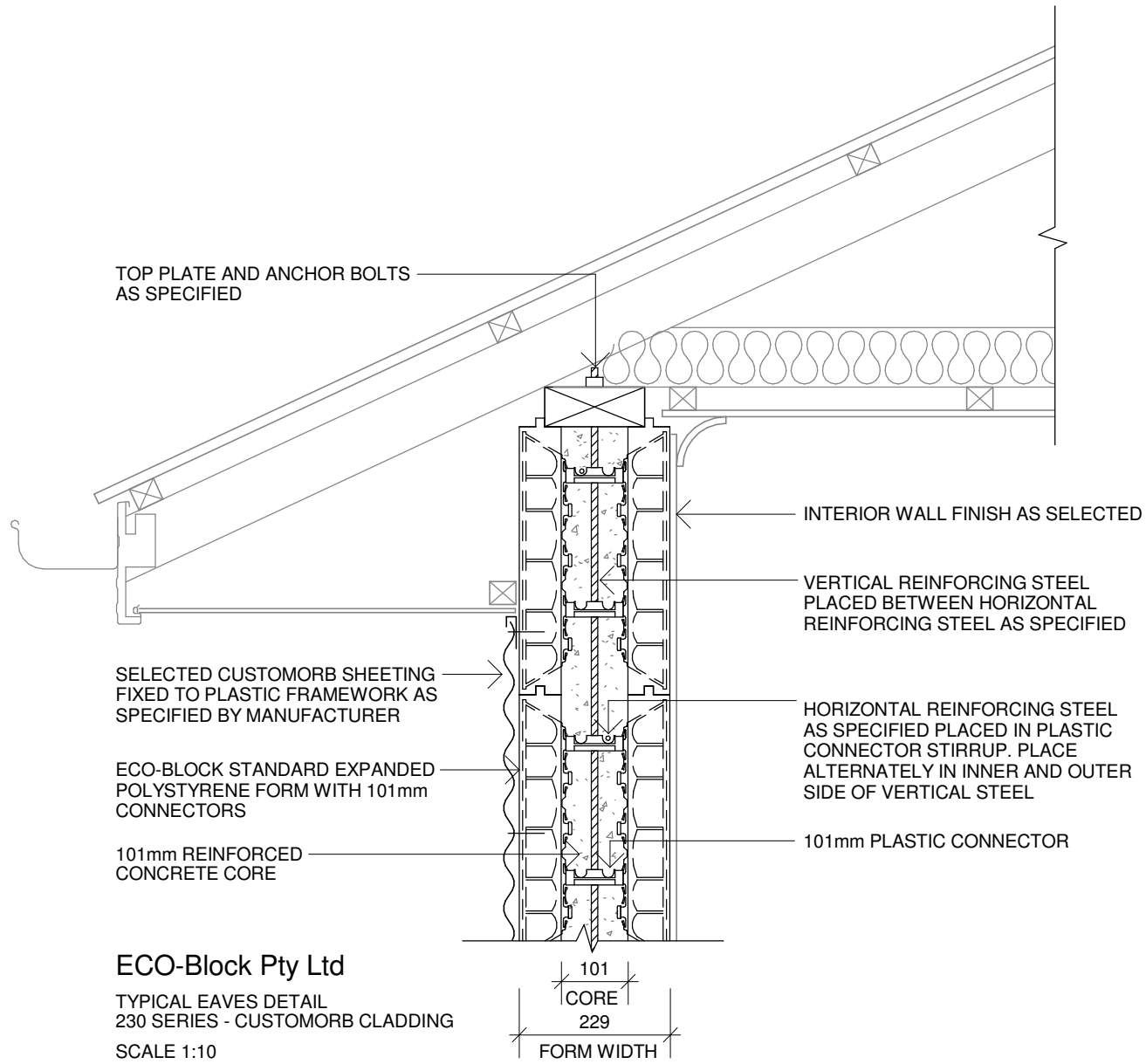
SCALE 1:10

NOTE:
IT IS THE RESPONSIBILITY OF THE DESIGNER / END USER TO VERIFY THAT STRUCTURES BUILT WITH ECO-BLOCK HAVE BEEN DESIGNED, ENGINEERED, AND CONSTRUCTED IN ACCORDANCE WITH ALL APPLICABLE BUILDING CODES AND REGULATIONS

Series 230 Interior Wall Connection

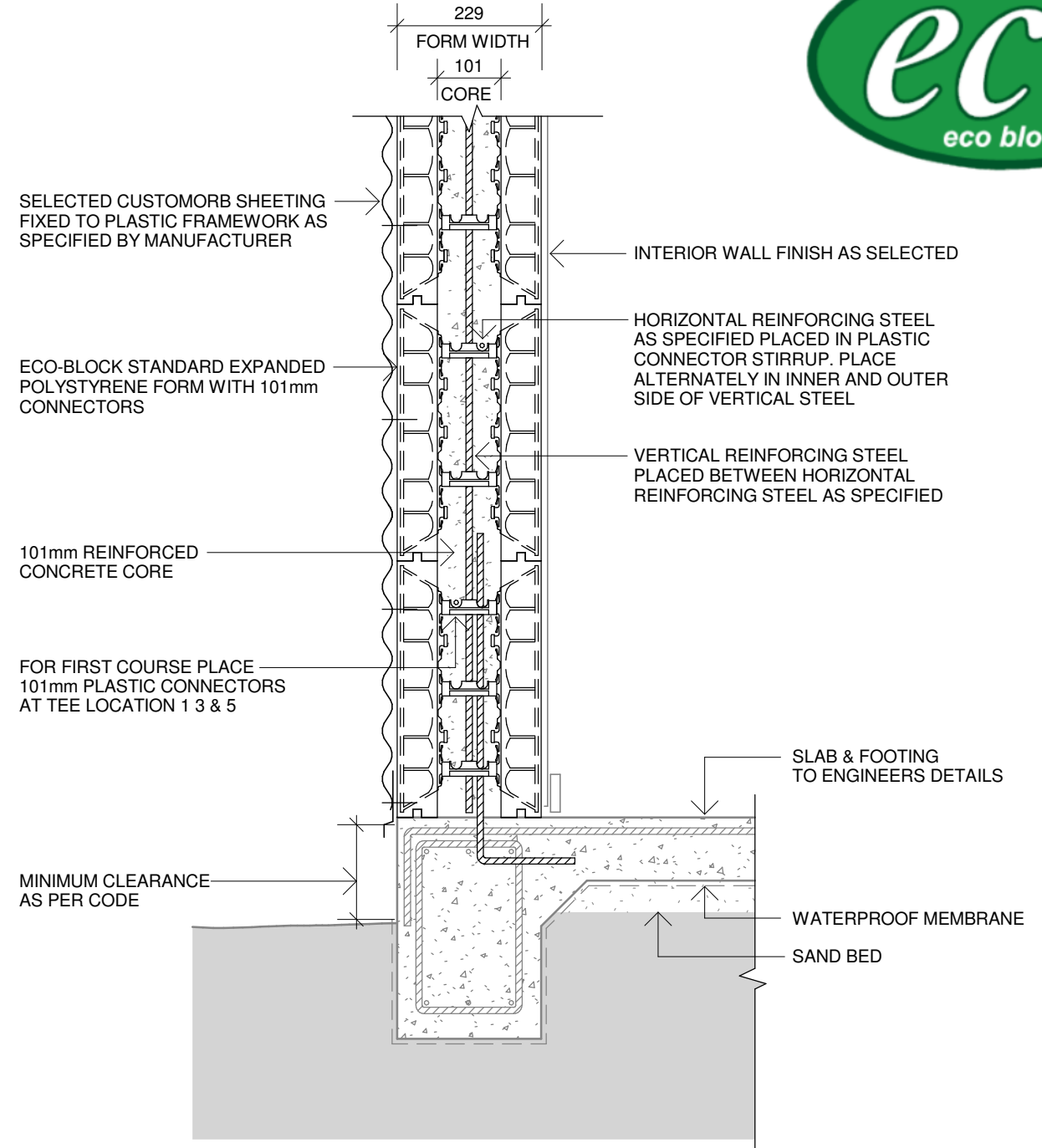
1 : 10

<p>Iss Date Issue Description</p>		<p>Rev Date Revision Description</p>				<p>0 1 2m 1:100</p>		<p>Eco-Block at for Eco-Block</p>		<p>Series 230 Interior Wall Connection Details</p>		<p>Scale at A3 1 : 10</p>		<p>Date 12/02/19 Job No</p>		<p>Drawn KR Checked PBL</p>		<p>Dwg No 006 Issue</p>	
-----------------------------------	--	--------------------------------------	--	--	--	-------------------------	--	--------------------------------------------------	--	---------------------------------------------------------------	--	-------------------------------	--	-------------------------------------	--	-----------------------------------------	--	----------------------------------------	--



ECO-Block Pty Ltd
 TYPICAL EAVES DETAIL
 230 SERIES - CUSTOMORB CLADDING
 SCALE 1:10

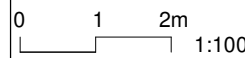
NOTE:
 IT IS THE RESPONSIBILITY OF THE DESIGNER / END USER TO VERIFY THAT STRUCTURES BUILT WITH ECO-BLOCK HAVE BEEN DESIGNED, ENGINEERED, AND CONSTRUCTED IN ACCORDANCE WITH ALL APPLICABLE BUILDING CODES AND REGULATIONS



ECO-Block Pty Ltd
 TYPICAL FOOTING DETAIL
 230 SERIES
 SCALE 1:10

NOTE:
 IT IS THE RESPONSIBILITY OF THE DESIGNER / END USER TO VERIFY THAT STRUCTURES BUILT WITH ECO-BLOCK HAVE BEEN DESIGNED, ENGINEERED, AND CONSTRUCTED IN ACCORDANCE WITH ALL APPLICABLE BUILDING CODES AND REGULATIONS

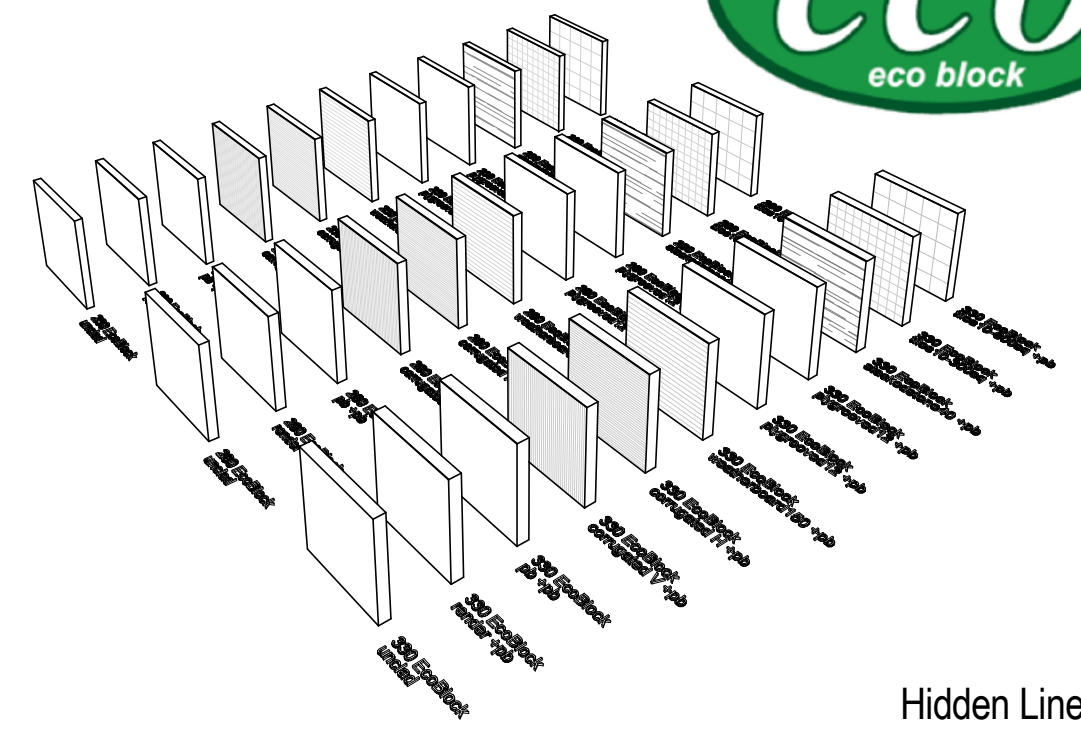
Customorb Cladding
 1 : 10



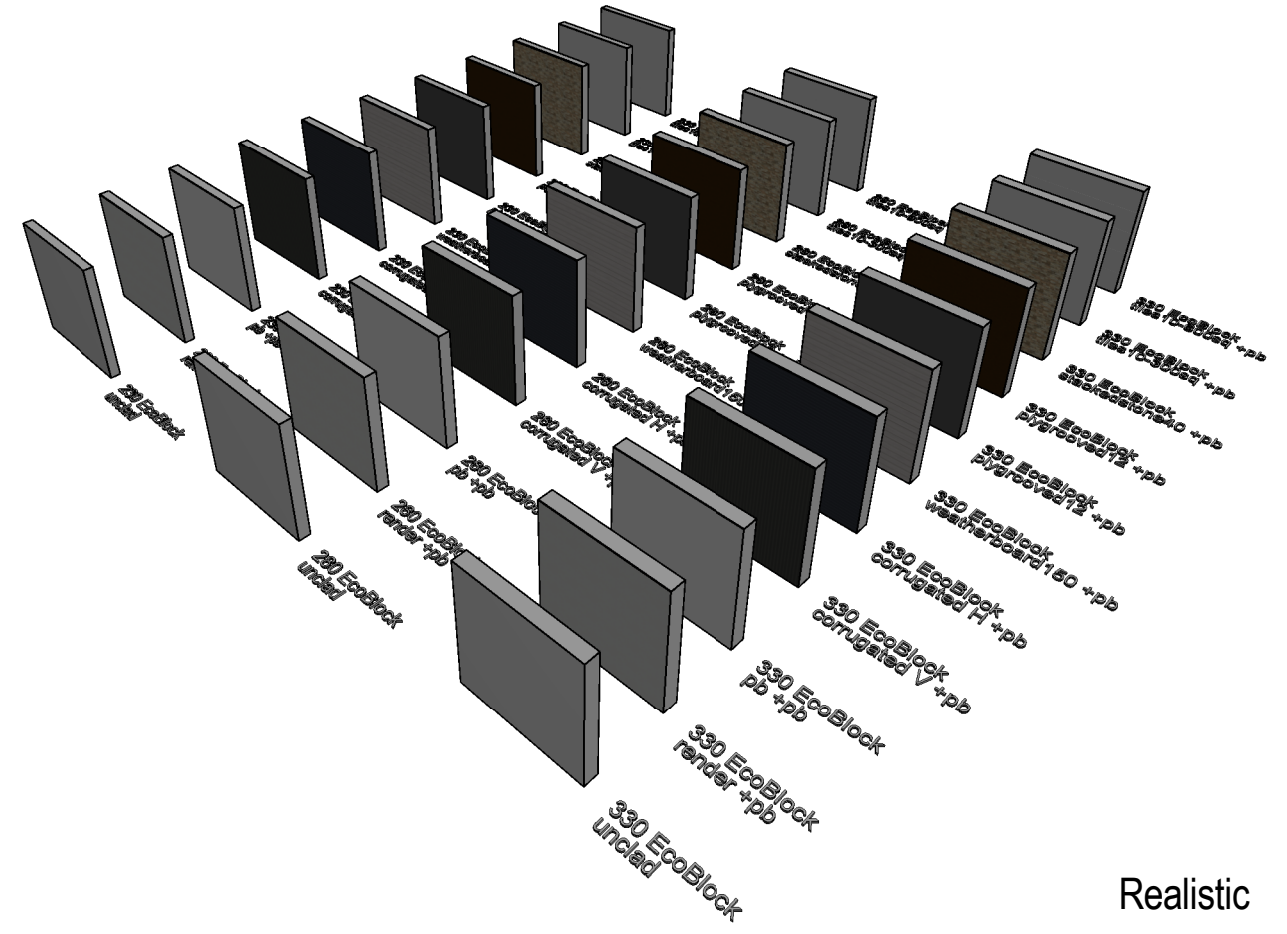
<p>Eco-Block</p> <p>at</p> <p>for Eco-Block</p>		<p>Customorb Cladding</p> <p>Details</p>		<p>Scale at A3 1 : 10</p> <p>Designed</p> <p>Drawn KR</p> <p>Checked PBL</p>	<p>Date 12/02/19</p> <p>Job No</p> <p>Dwg No 007</p> <p>Issue</p>
--------------------------------------------------------	--	-------------------------------------------------	--	------------------------------------------------------------------------------------------	----------------------------------------------------------------------------------



	230 EcoBlock tiles10-600sq +pb		280 EcoBlock tiles10-600sq +pb		330 EcoBlock tiles10-600sq +pb
	230 EcoBlock tiles10-300sq +pb		280 EcoBlock tiles10-300sq +pb		330 EcoBlock tiles10-300sq +pb
	230 EcoBlock stackedstone40 +pb		280 EcoBlock stackedstone40 +pb		330 EcoBlock stackedstone40 +pb
	230 EcoBlock plygrooved12 +pb		280 EcoBlock plygrooved12 +pb		330 EcoBlock plygrooved12 +pb
	230 EcoBlock plygrooved12 +pb		280 EcoBlock plygrooved12 +pb		330 EcoBlock plygrooved12 +pb
	230 EcoBlock weatherboard150 +pb		280 EcoBlock weatherboard150 +pb		330 EcoBlock weatherboard150 +pb
	230 EcoBlock corrugated H +pb		280 EcoBlock corrugated H +pb		330 EcoBlock corrugated H +pb
	230 EcoBlock corrugated V +pb		280 EcoBlock corrugated V +pb		330 EcoBlock corrugated V +pb
	230 EcoBlock pb +pb		280 EcoBlock pb +pb		330 EcoBlock pb +pb
	230 EcoBlock render +pb		280 EcoBlock render +pb		330 EcoBlock render +pb
	230 EcoBlock unclad		280 EcoBlock unclad		330 EcoBlock unclad



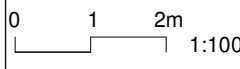
Hidden Line



Realistic

Level 0
1:100

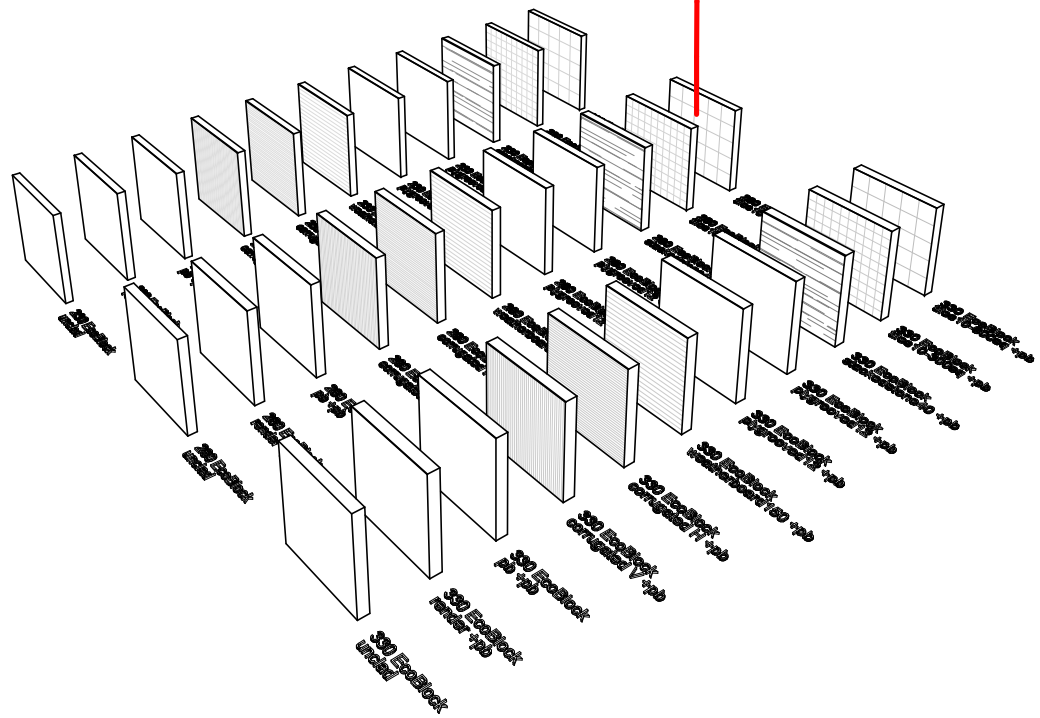
Iss	Date	Issue Description	Rev	Date	Revision Description



Eco-Block
at
for Eco-Block

Available Walls
Details

Scale at A3
1 : 100
Date
02/21/19
Job No
Dwg No
008
Issue



Properties

Basic Wall
QARC EcoBlock280 300mm 10tiles 600sq 10pb

Walls (1) Edit Type

Constraints

Location Line	Core Face: Exterior
Base Constraint	Level 0
Base Offset	0.0
Base is Attached	<input type="checkbox"/>
Base Extension Distance	0.0
Top Constraint	Unconnected
Unconnected Height	3000.0
Top Offset	0.0
Top is Attached	<input type="checkbox"/>
Top Extension Distance	0.0
Room Bounding	<input checked="" type="checkbox"/>
Related to Mass	<input type="checkbox"/>

Structural

Structural	<input type="checkbox"/>
Enable Analytical Model	<input type="checkbox"/>
Structural Usage	Non-bearing

Dimensions

Length	3000.0
Area	9.000
Volume	2.700

Identity Data

Image	
Comments	
Mark	

Phasing

Phase Created	Existing
Phase Demolished	None

Data

Sound Transmission Class	51
--------------------------	----

Properties help Apply

Type Properties

Family: System Family: Basic Wall Load...

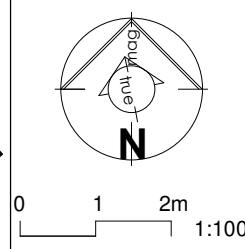
Type: QARC EcoBlock280 300mm 10tiles 600sq Duplicate... Rename...

Type Parameters

Parameter	Value
Construction	
Structure	Edit...
Wrapping at Inserts	Do not wrap
Wrapping at Ends	None
Width	300.0
Function	Interior
Graphics	
Coarse Scale Fill Pattern	Solid fill
Coarse Scale Fill Color	RGB 050-050-050
Materials and Finishes	
Structural Material	Concrete - Cast In Situ
Analytical Properties	
Heat Transfer Coefficient (U)	0.2592
Thermal Resistance (R)	3.8577 (m ² ·K)/W
Thermal mass	21.47 kJ/K
Absorptance	0.100000
Roughness	1
Identity Data	
Type Image	
Keynote	
Model	Series 280
Manufacturer	Eco-Block Distribution Pty Ltd
Type Comments	
URL	www.eco-blockaustralia.com.au
Description	Insulated Concrete Wall System
Assembly Description	
Assembly Code	
Type Mark	
Fire Rating	3 hours
Cost	

<< Preview OK Cancel Apply

Iss	Date	Issue Description	Rev	Date	Revision Description



Eco-Block
at
for Eco-Block

Wall Properties
Details

Scale at A3
Date 03/07/19
Job No
Designed
Dwg No 009
Issue
Drawn KR
Checked PBL